



Department of Public Works
Engineering Division
Robert F. Phillips, P.E., City Engineer
City-County Building, Room 115
210 Martin Luther King, Jr. Boulevard
Madison, Wisconsin 53703
Phone: (608) 266-4751
Fax: (608) 264-9275
engineering@cityofmadison.com
www.cityofmadison.com/engineering

Assistant City Engineer
Michael R. Dailey, P.E.
Principal Engineers
Christina M. Bachmann, P.E.
John S. Fahrney, P.E.
Gregory T. Fries, P.E.
Christopher J. Petykowski, P.E.
Facilities & Sustainability
Jeanne E. Hoffman, Manager
Operations Manager
Kathleen M. Cryan
Mapping Section Manager
Eric T. Pederson, P.S.
Financial Manager
Steven B. Danner-Rivers
Hydrogeologist
Brynn Bemis

February 19, 2014

NOTICE OF ADDENDUM -

**ADDENDUM NO. 2
ELVER AND REINDAHL PARK SPLASH PADS
CONTRACT NO. 7259**

Revise and amend the contract document(s) for the above project as stated in this addendum, otherwise, the original document shall remain in effect.

Plans

1. The revised plan sheet substitutions below reflect changes to the bicycle parking pad dimensions, the water containment system type and connections, and storm sewer connections for Elver Park Splash Pad.

• **DELETE:**

- SHEET C3.0
- SHEET C5.0
- SHEET C5.2
- SHEET C7.9
- SHEET C7.10
- SHEET C7.11
- SHEET C7.12
- SHEET C7.13

• **REPLACE WITH:**

- SHEET C3.0 ADDENDUM 2
- SHEET C5.0 ADDENDUM 2
- SHEET C5.2 ADDENDUM 2
- SHEET C7.9 ADDENDUM 2
- SHEET C7.10 ADDENDUM 2
- SHEET C7.11 ADDENDUM 2
- SHEET C7.12 ADDENDUM 2
- SHEET C7.13 ADDENDUM 2

2. REINDAHL SPLASH PAD, SHEET C500 UTILITY PLAN:

- Add the following NOTES to this sheet:
 1. Castings for 4x4 SAS and sanitary manholes shall be per City of Madison Standard Detail Drawing 5.7.16, casting Type R-1550, 9" Non-rocking access structure frame.
 2. Castings for 3x3 catch basin shall be per City of Madison Standard Detail Drawing 5.7.3, casting Type R-1878-A10G.

Special Provisions

1. Page D-2:

- **DELETE – SECTION 105.9: SURVEYS, POINTS AND INSTRUCTION**
- **REPLACE WITH:**

SECTION 105.9: SURVEYS, POINTS, AND INSTRUCTION

The Contractor shall be responsible for setting all lines and/or grades required to complete the work for the Elver Park and Reindahl Park splash pads. Any questions regarding the layout and staking of this project should be directed to Sarah Lerner at the Parks Division at 261-4281. Horizontal and vertical survey controls already exist onsite and are available from the City of Madison Parks Division. CAD files will be made available to the awarded Contractor's surveyor.

Proposal Page

1. REVISE ELVER PARK SPLASH PAD PROPOSAL PAGE:

BID ITEM 30301 5 INCH CONCRETE SIDEWALK (TYPE 1) quantity is 7193 SF.

Please acknowledge this addendum on page E1 of the contract documents and/or in Section E: Bidder's Acknowledgement on Bid Express.

Electronic version of these documents can be found on the Bid Express web site at:

<http://www.bidexpress.com>

If you are unable to download plan revisions associated with the addendum, please contact the Engineering office at 608-266-4751 receive the material by another route.



Kevin Briski, Parks Superintendent

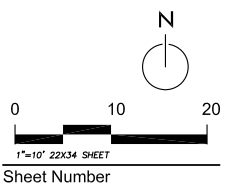
Revision	Date
ADDENDUM 2	02/14/2014

Project Name
**Elver Park
 Splashpad**

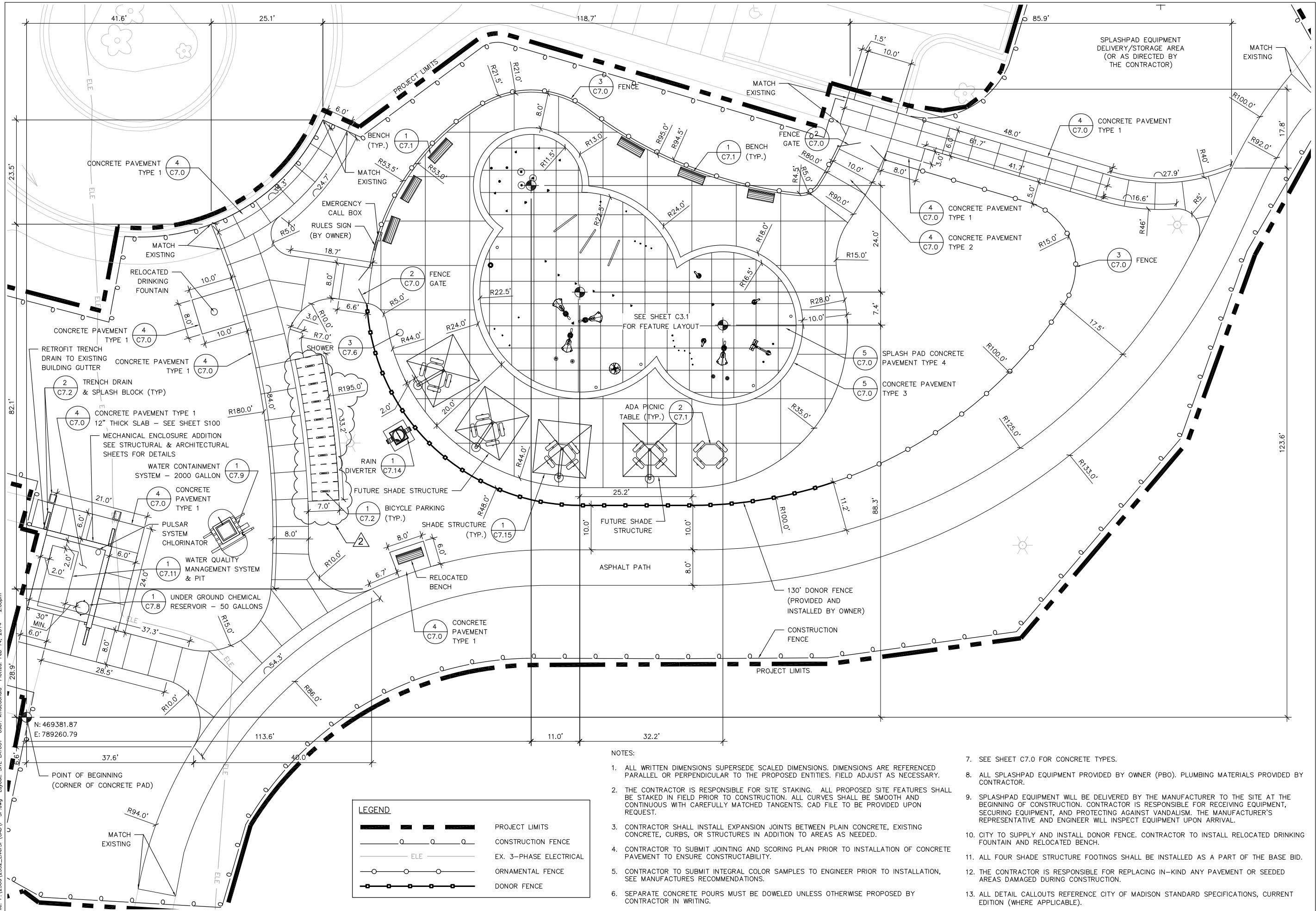
1250 McKenna Blvd
 Madison, WI 53719

Drawn By: KM
 Checked By: BT
 File: P-SP
 Issued For: Bidding
 Issue Date: 1/30/2014
 Project No. 2532

DRAWING
**SITE LAYOUT
 PLAN**



C3.0



- NOTES:
- ALL WRITTEN DIMENSIONS SUPERSEDE SCALED DIMENSIONS. DIMENSIONS ARE REFERENCED PARALLEL OR PERPENDICULAR TO THE PROPOSED ENTITIES. FIELD ADJUST AS NECESSARY.
 - THE CONTRACTOR IS RESPONSIBLE FOR SITE STAKING. ALL PROPOSED SITE FEATURES SHALL BE STAKED IN FIELD PRIOR TO CONSTRUCTION. ALL CURVES SHALL BE SMOOTH AND CONTINUOUS WITH CAREFULLY MATCHED TANGENTS. CAD FILE TO BE PROVIDED UPON REQUEST.
 - CONTRACTOR SHALL INSTALL EXPANSION JOINTS BETWEEN PLAIN CONCRETE, EXISTING CONCRETE, CURBS, OR STRUCTURES IN ADDITION TO AREAS AS NEEDED.
 - CONTRACTOR TO SUBMIT JOINTING AND SCORING PLAN PRIOR TO INSTALLATION OF CONCRETE PAVEMENT TO ENSURE CONSTRUCTABILITY.
 - CONTRACTOR TO SUBMIT INTEGRAL COLOR SAMPLES TO ENGINEER PRIOR TO INSTALLATION, SEE MANUFACTURER'S RECOMMENDATIONS.
 - SEPARATE CONCRETE POURS MUST BE DOWELED UNLESS OTHERWISE PROPOSED BY CONTRACTOR IN WRITING.
 - SEE SHEET C7.0 FOR CONCRETE TYPES.
 - ALL SPLASHPAD EQUIPMENT PROVIDED BY OWNER (PBO). PLUMBING MATERIALS PROVIDED BY CONTRACTOR.
 - SPLASHPAD EQUIPMENT WILL BE DELIVERED BY THE MANUFACTURER TO THE SITE AT THE BEGINNING OF CONSTRUCTION. CONTRACTOR IS RESPONSIBLE FOR RECEIVING EQUIPMENT, SECURING EQUIPMENT, AND PROTECTING AGAINST VANDALISM. THE MANUFACTURER'S REPRESENTATIVE AND ENGINEER WILL INSPECT EQUIPMENT UPON ARRIVAL.
 - CITY TO SUPPLY AND INSTALL DONOR FENCE. CONTRACTOR TO INSTALL RELOCATED DRINKING FOUNTAIN AND RELOCATED BENCH.
 - ALL FOUR SHADE STRUCTURE FOOTINGS SHALL BE INSTALLED AS A PART OF THE BASE BID.
 - THE CONTRACTOR IS RESPONSIBLE FOR REPLACING IN-KIND ANY PAVEMENT OR SEEDED AREAS DAMAGED DURING CONSTRUCTION.
 - ALL DETAIL CALLOUTS REFERENCE CITY OF MADISON STANDARD SPECIFICATIONS, CURRENT EDITION (WHERE APPLICABLE).

LEGEND	
	PROJECT LIMITS
	CONSTRUCTION FENCE
	EX. 3-PHASE ELECTRICAL
	ORNAMENTAL FENCE
	DONOR FENCE

File: P:\2500\2532_ElverSP\CAD\P-SP.dwg Layout: SITE LAYOUT User: kmacedonald Plotted: Feb 14, 2014 - 2:08pm
 N: 469381.87
 E: 789260.79

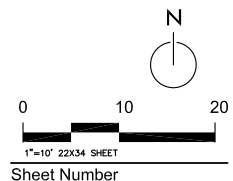
Revision	Date
ADDENDUM 2	02/14/2014

Project Name
**Elver Park
 Splashpad**

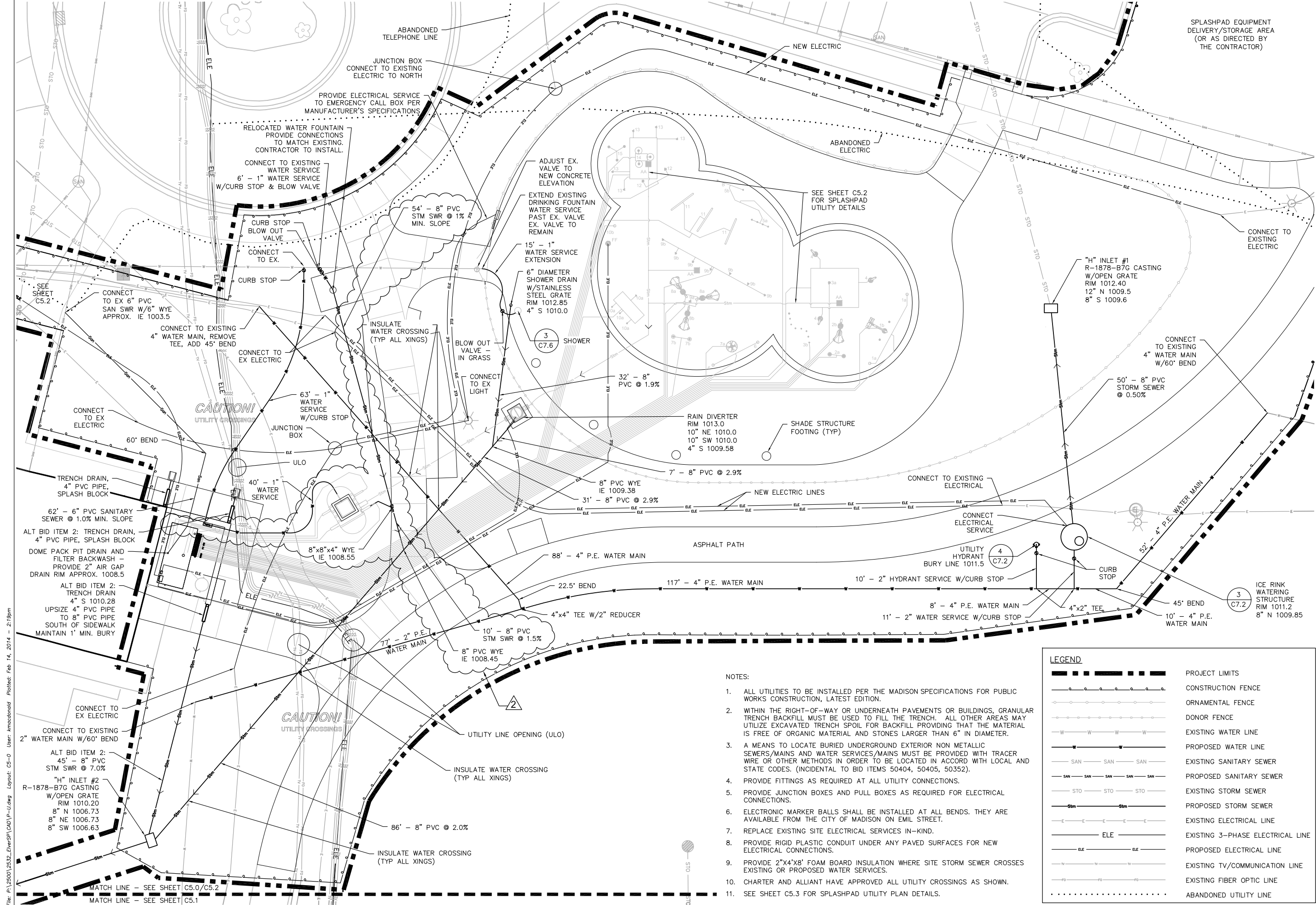
1250 McKenna Blvd
 Madison, WI 53719

Drawn By: KM
 Checked By: BT
 File: P-U
 Issued For: Bidding
 Issue Date: 1/30/2014
 Project No. 2532

DRAWING
**SITE UTILITY
 PLAN**



C5.0



LEGEND	
	PROJECT LIMITS
	CONSTRUCTION FENCE
	ORNAMENTAL FENCE
	DONOR FENCE
	EXISTING WATER LINE
	PROPOSED WATER LINE
	EXISTING SANITARY SEWER
	PROPOSED SANITARY SEWER
	EXISTING STORM SEWER
	PROPOSED STORM SEWER
	EXISTING ELECTRICAL LINE
	EXISTING 3-PHASE ELECTRICAL LINE
	PROPOSED ELECTRICAL LINE
	EXISTING TV/COMMUNICATION LINE
	EXISTING FIBER OPTIC LINE
	ABANDONED UTILITY LINE

- NOTES:
- ALL UTILITIES TO BE INSTALLED PER THE MADISON SPECIFICATIONS FOR PUBLIC WORKS CONSTRUCTION, LATEST EDITION.
 - WITHIN THE RIGHT-OF-WAY OR UNDERNEATH PAVEMENTS OR BUILDINGS, GRANULAR TRENCH BACKFILL MUST BE USED TO FILL THE TRENCH. ALL OTHER AREAS MAY UTILIZE EXCAVATED TRENCH SPOIL FOR BACKFILL PROVIDING THAT THE MATERIAL IS FREE OF ORGANIC MATERIAL AND STONES LARGER THAN 6" IN DIAMETER.
 - A MEANS TO LOCATE BURIED UNDERGROUND EXTERIOR NON METALLIC SEWERS/MAINS AND WATER SERVICES/MAINS MUST BE PROVIDED WITH TRACER WIRE OR OTHER METHODS IN ORDER TO BE LOCATED IN ACCORD WITH LOCAL AND STATE CODES. (INCIDENTAL TO BID ITEMS 50404, 50405, 50352).
 - PROVIDE FITTINGS AS REQUIRED AT ALL UTILITY CONNECTIONS.
 - PROVIDE JUNCTION BOXES AND PULL BOXES AS REQUIRED FOR ELECTRICAL CONNECTIONS.
 - ELECTRONIC MARKER BALLS SHALL BE INSTALLED AT ALL BENDS. THEY ARE AVAILABLE FROM THE CITY OF MADISON ON EMIL STREET.
 - REPLACE EXISTING SITE ELECTRICAL SERVICES IN-KIND.
 - PROVIDE RIGID PLASTIC CONDUIT UNDER ANY PAVED SURFACES FOR NEW ELECTRICAL CONNECTIONS.
 - PROVIDE 2"x4"x8" FOAM BOARD INSULATION WHERE SITE STORM SEWER CROSSES EXISTING OR PROPOSED WATER SERVICES.
 - CHARTER AND ALLIANT HAVE APPROVED ALL UTILITY CROSSINGS AS SHOWN.
 - SEE SHEET C5.3 FOR SPLASHPAD UTILITY PLAN DETAILS.

File: P:\2500\2532_ElverSP(CAD)\P-U.dwg Layout: C5-0 User: Imacdonald Plotted: Feb 14, 2014 - 2:19pm

NOTES:

1. ALL UTILITIES TO BE INSTALLED PER THE MADISON SPECIFICATIONS FOR PUBLIC WORKS CONSTRUCTION, LATEST EDITION.
2. WITHIN THE RIGHT-OF-WAY OR UNDERNEATH PAVEMENTS OR BUILDINGS, GRANULAR TRENCH BACKFILL MUST BE USED TO FILL THE TRENCH. ALL OTHER AREAS MAY UTILIZE EXCAVATED TRENCH SPOIL FOR BACKFILL PROVIDING THE MATERIAL IS FREE OF ORGANIC MATERIAL AND STONES LARGER THAN 6" IN DIAMETER.
3. A MEANS TO LOCATE BURIED UNDERGROUND EXISTING NON METALLIC SEWERS/MAINS AND WATER SERVICES/MAINS MUST BE PROVIDED WITH TRACER WIRE OR OTHER METHODS IN ORDER TO BE LOCATED IN ACCORD WITH LOCAL AND STATE CODES. (INCIDENTAL TO BID ITEMS 50404, 50405, 50352).
4. PROVIDE FITTINGS AS REQUIRED AT ALL UTILITY CONNECTIONS.
5. PROVIDE JUNCTION BOXES AND PULL BOXES AS REQUIRED FOR ELECTRICAL CONNECTIONS.
6. ELECTRONIC MARKER BALLS SHALL BE INSTALLED AT ALL BENDS. THEY ARE AVAILABLE FROM THE CITY OF MADISON ON EMIL STREET.
7. REPLACE EXISTING SITE ELECTRICAL SERVICES IN-KIND.
8. PROVIDE RIGID PLASTIC CONDUIT UNDER ANY PAVED SURFACES FOR NEW ELECTRICAL CONNECTIONS.
9. PROVIDE 2"x4"x8" FOAM BOARD INSULATION WHERE SITE STORM SEWER CROSSES EXISTING OR PROPOSED WATER SERVICES.
10. CHARTER AND ALLIANT HAVE APPROVED ALL UTILITY CROSSINGS AS SHOWN.
11. SEE SHEET C5.3 FOR SPLASHPAD UTILITY PLAN DETAILS.

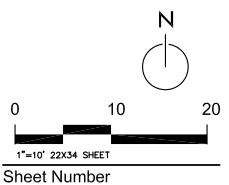
Revision	Date
ADDENDUM 2	02/14/2014

Project Name
**Elver Park
 Splashpad**

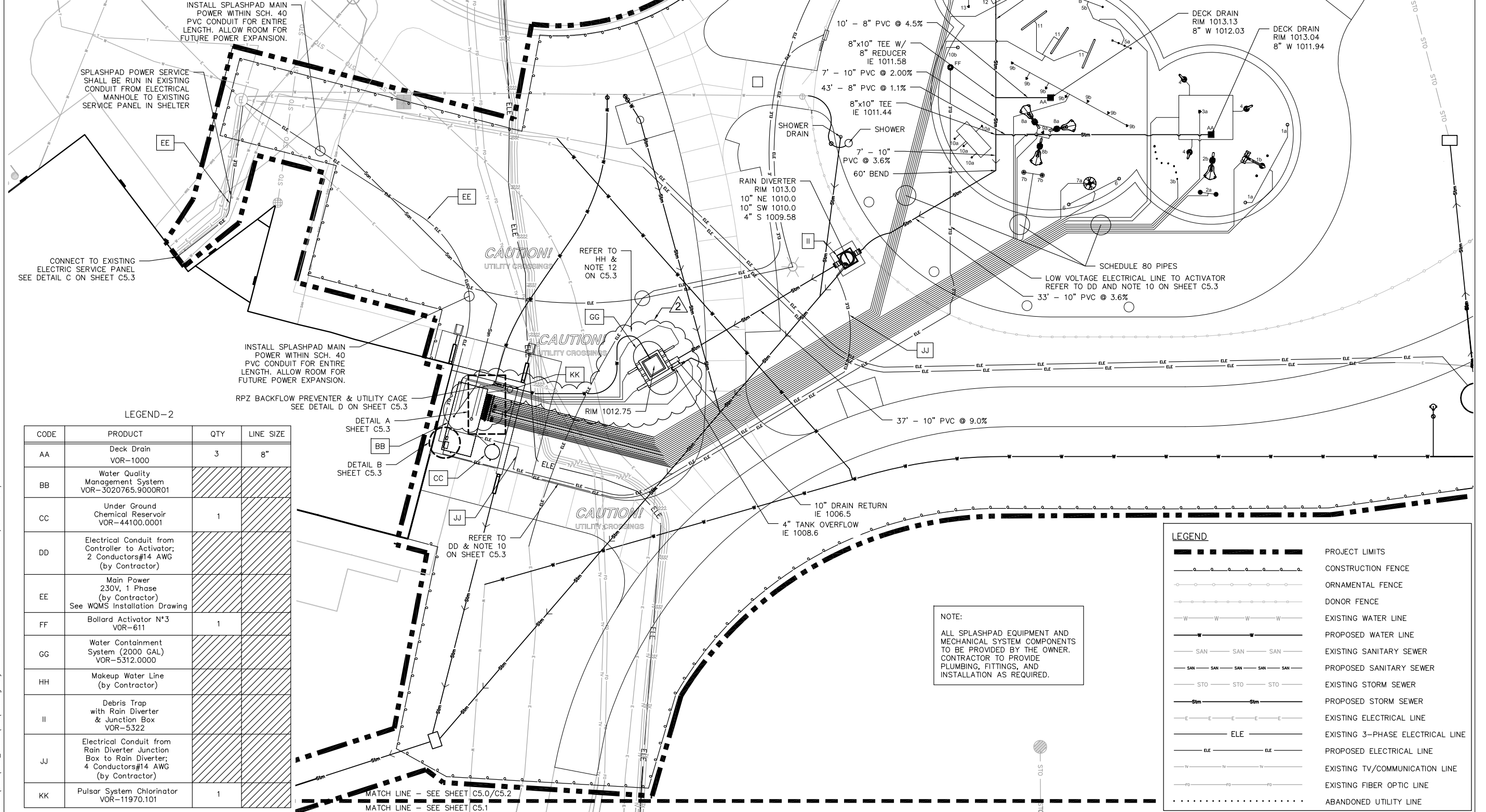
1250 McKenna Blvd
 Madison, WI 53719

Drawn By: KM
 Checked By: BT
 File: P-U
 Issued For: Bidding
 Issue Date: 1/30/2014
 Project No. 2532

DRAWING
**SPLASHPAD
 UTILITY PLAN**



Sheet Number
C5.2



LEGEND-2

CODE	PRODUCT	QTY	LINE SIZE
AA	Deck Drain VOR-1000	3	8"
BB	Water Quality Management System VOR-3020765.9000R01		
CC	Under Ground Chemical Reservoir VOR-44100.0001	1	
DD	Electrical Conduit from Controller to Activator; 2 Conductors#14 AWG (by Contractor)		
EE	Main Power 230V, 1 Phase (by Contractor) See WQMS Installation Drawing		
FF	Bollard Activator N#3 VOR-611	1	
GG	Water Containment System (2000 GAL) VOR-5312.0000		
HH	Makeup Water Line (by Contractor)		
II	Debris Trap with Rain Diverter & Junction Box VOR-5322		
JJ	Electrical Conduit from Rain Diverter Junction Box to Rain Diverter; 4 Conductors#14 AWG (by Contractor)		
KK	Pulsar System Chlorinator VOR-11970.101	1	

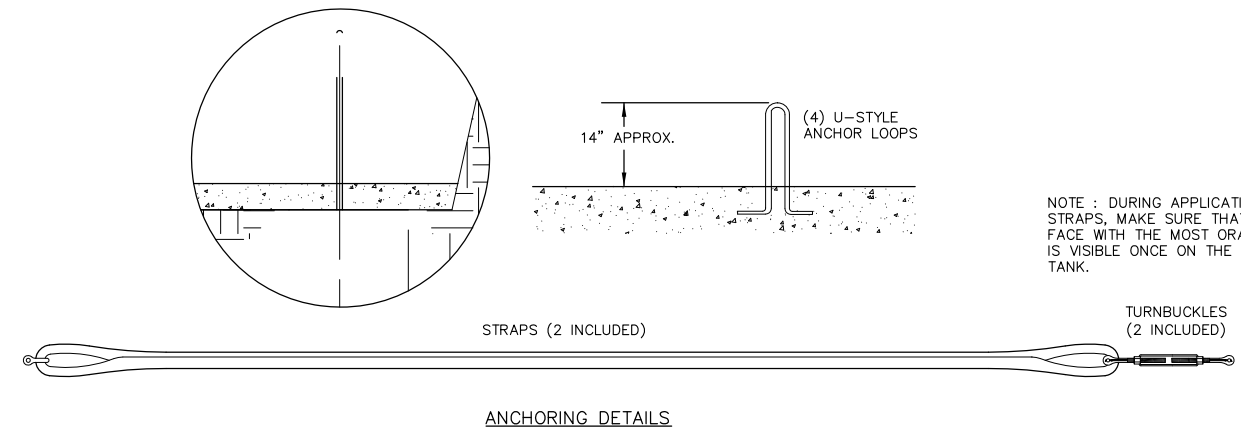
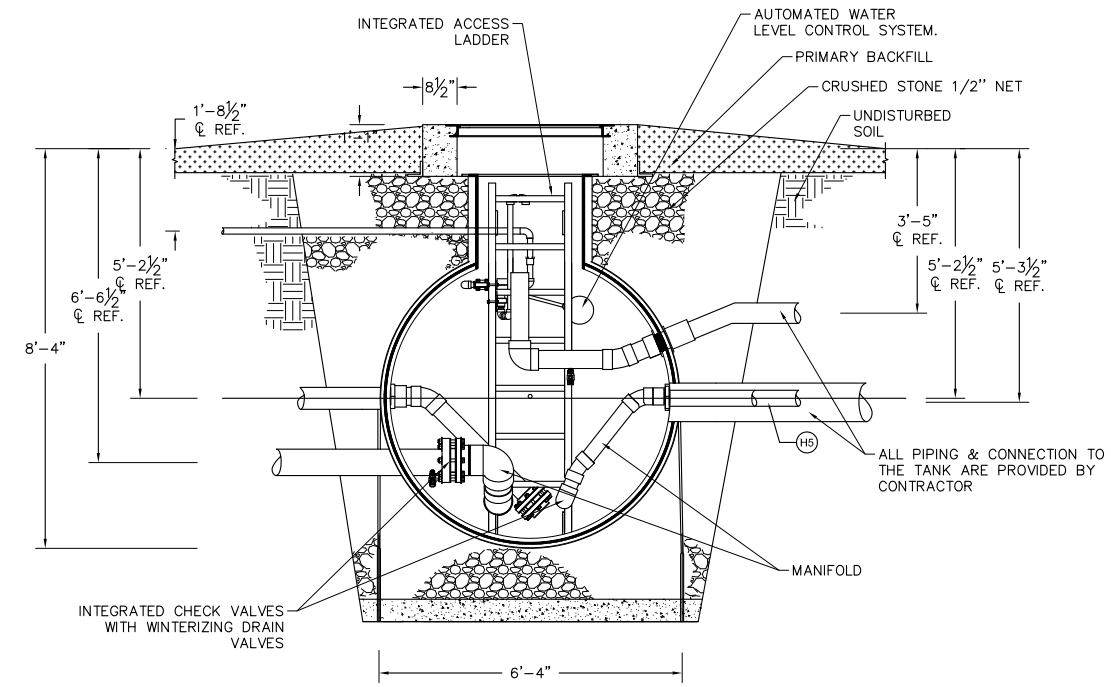
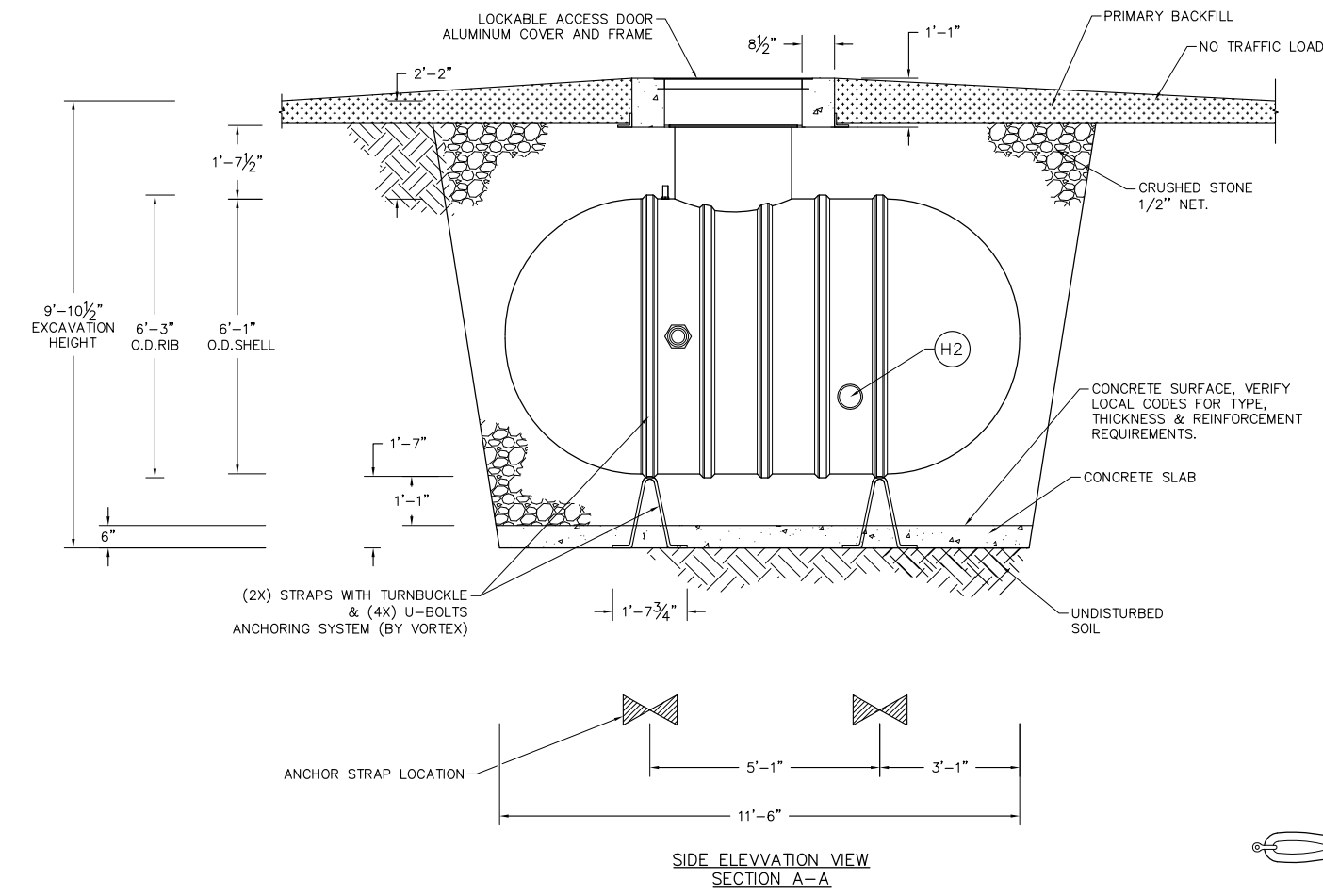
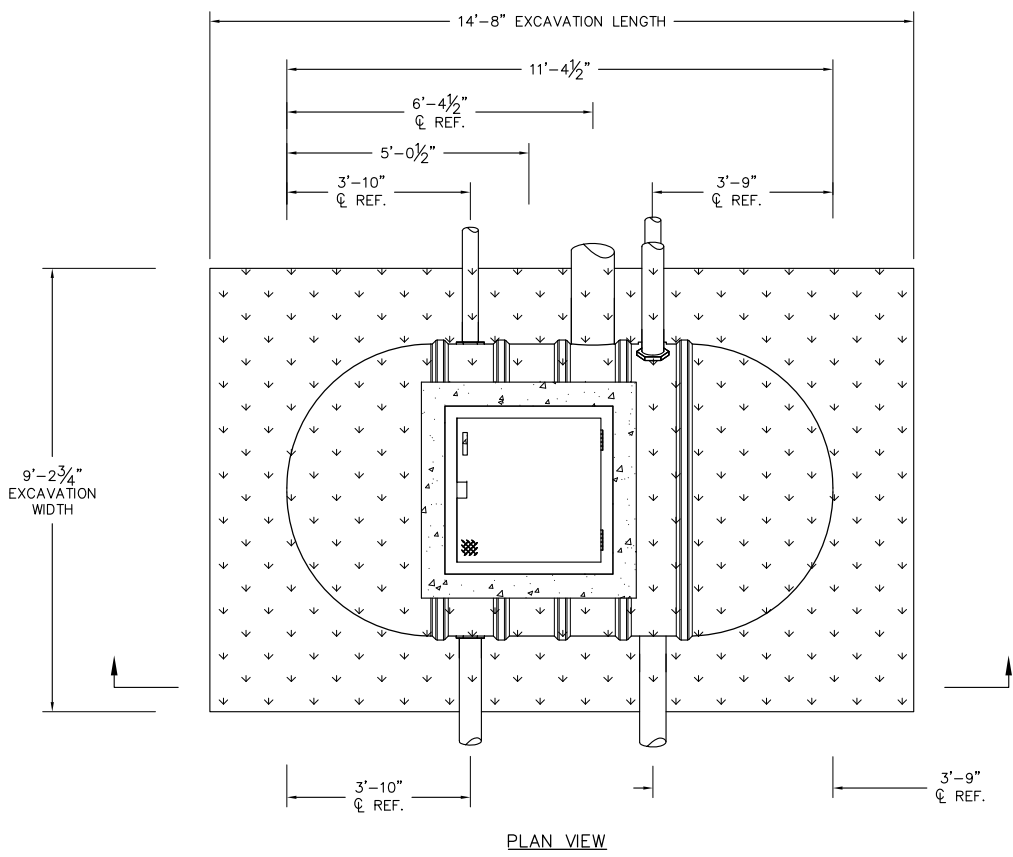
LEGEND

	PROJECT LIMITS
	CONSTRUCTION FENCE
	ORNAMENTAL FENCE
	DONOR FENCE
	EXISTING WATER LINE
	PROPOSED WATER LINE
	EXISTING SANITARY SEWER
	PROPOSED SANITARY SEWER
	EXISTING STORM SEWER
	PROPOSED STORM SEWER
	EXISTING ELECTRICAL LINE
	EXISTING 3-PHASE ELECTRICAL LINE
	PROPOSED ELECTRICAL LINE
	EXISTING TV/COMMUNICATION LINE
	EXISTING FIBER OPTIC LINE
	ABANDONED UTILITY LINE

NOTE:
 ALL SPLASHPAD EQUIPMENT AND MECHANICAL SYSTEM COMPONENTS TO BE PROVIDED BY THE OWNER. CONTRACTOR TO PROVIDE PLUMBING, FITTINGS, AND INSTALLATION AS REQUIRED.

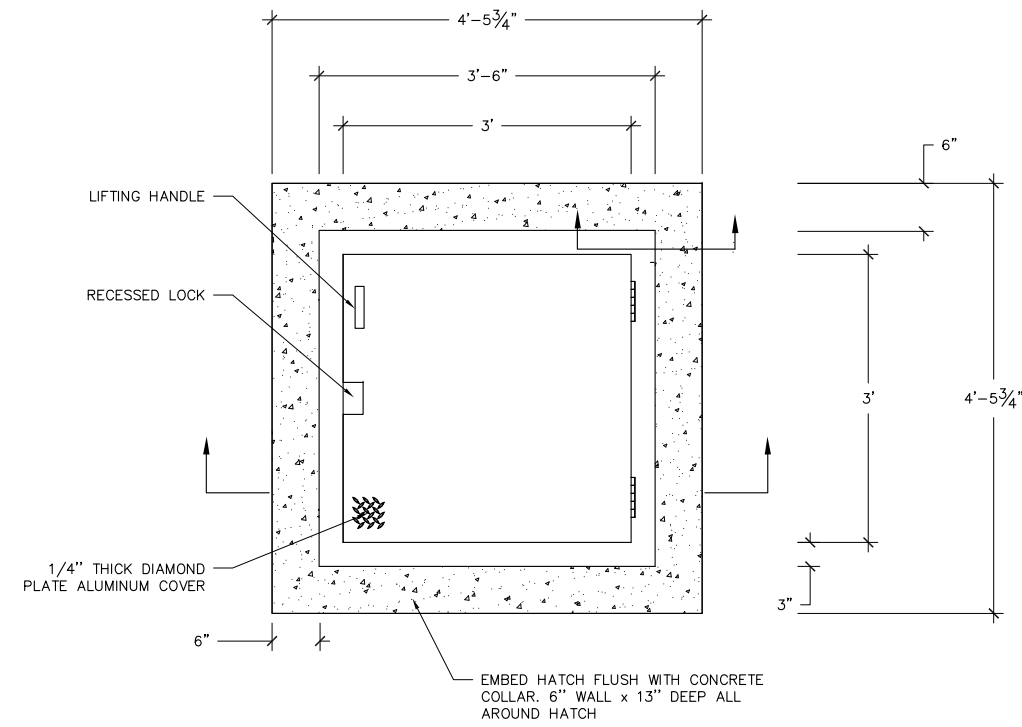
File: F:\2500\2532_ElverSP\CAD\Plan\Layout_C5-2 User: Immacandild Plotted: Feb 14, 2014 - 2:24pm

LINE	DESCRIPTION	SIZE	HEIGHT FROM C/L
H1	MAIN DRAIN RETURN	10"	-1"
H2	PLAY PRODUCT SUCTION OUTLET (PUMP SUCTION MANIFOLD OPTIONAL)	6"	-16"
H3	BYPASS RETURN	3"	0
H4	FILTER PUMP SUCTION OUTLET	4"	0
H5	FILTER RETURN (RETURN MANIFOLD OPTIONAL)	3"	0
H6	FRESH WATER INLET	1"	40"
H7	OVERFLOW OUTLET	4"	14"



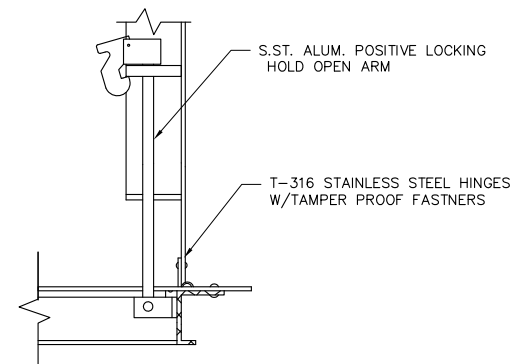
NOTE : DURING APPLICATION OF THE STRAPS, MAKE SURE THAT THE FACE WITH THE MOST ORANGE PART IS VISIBLE ONCE ON THE HOLDING TANK.

File: F:\2500\2532_ElverSP(CAD)\P-D.dwg Layout: C7.9 User: kmacedonia Plotted: Feb 14, 2014 - 2:45pm

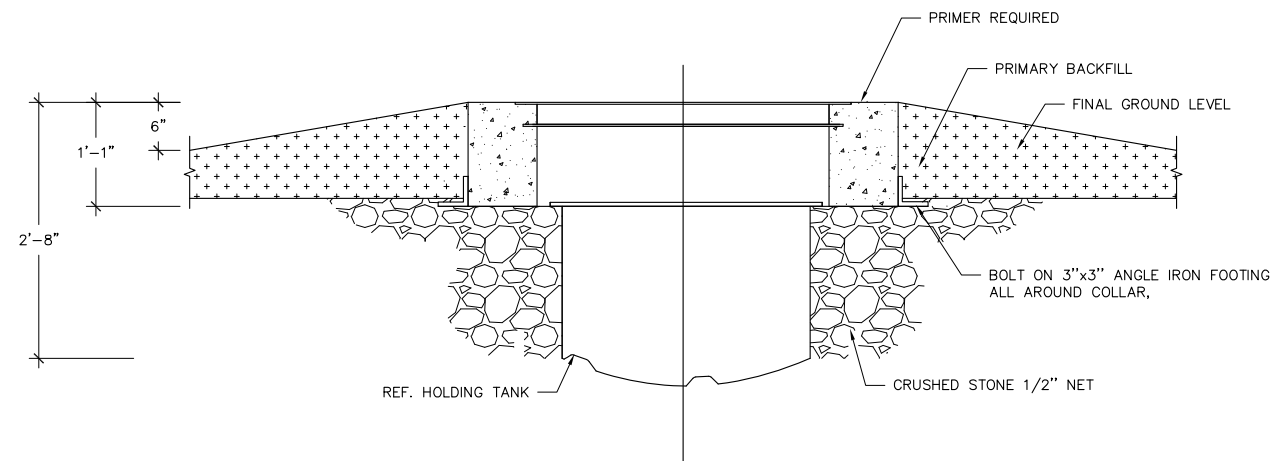


PLAN VIEW

NOTE: COVER SHOWN IN OPEN POSITION.



SECTION B-B



SECTION A-A

THE 2000-GALLON TANK SHALL BE A PRE-FABRICATED UNIT DESIGNED TO SAFELY STORE THE WATER USED FOR THE FACILITY. THE TANK SHALL BE PRE-ASSEMBLED AT THE FACTORY AND SHALL INCLUDE THE FOLLOWING CONNECTIONS: ONE 10" INLET FOR MAIN DRAIN, ONE 6" FEATURE PUMP SUCTION OUTLET, ONE 3" RETURN INLET FROM FEATURE PUMP, ONE 4" FILTER PUMP SUCTION OUTLET, ONE 3" FILTRATION RETURN INLET, ONE 1" INLET FOR FRESHWATER AND ONE 4" OUTLET FOR OVERFLOW/DISCHARGE. THE TANK SHALL ALSO INCLUDE A WATER LEVEL DETECTION SYSTEM AND ONE ACCESS HATCH WITH LADDER. IT SHALL HAVE THE FOLLOWING CHARACTERISTICS:

TANK

- 2000 GALLON CAPACITY
- FIBERGLASS
- SINGLE WALL
- Ø 73", ~136" LONG
- FIBERGLASS LADDER INCLUDED

ANCHOR

- ANCHORING STRAPS WITH HARDWARE
- U-BOLT TYPE EMBEDDED IN CONCRETE

ACCESS HATCH

- ALUMINUM ACCESS HATCH
- HINGED AND PAD-LOCKED, WITH ALUMINUM FRAME AND SS HARDWARE

LEVEL CONTROL

- FLOAT VALVE CONNECTED TO MAKE UP WATER LINE
- POLYPROPYLENE ANTI CORROSION VALVE
- INLET SIZE 1", OUTLET SIZE 1"
- MAXIMUM WORKING PRESSURE 100 PSI

INLETS

- 10" INLET FOR MAIN DRAIN
- 3" INLET FOR FEATURE RETURN
- 3" INLET FOR FILTRATION RETURN (RETURN MANIFOLD OPTIONAL)
- 1" INLET FOR FRESHWATER

OUTLETS

- 6" OUTLET FOR PLAY PRODUCT PUMP(PUMP SUCTION MANIFOLD OPTIONAL)
- 4" OUTLET FOR FILTER PUMP
- 4" OUTLET FOR OVERFLOW / DISCHARGE

2

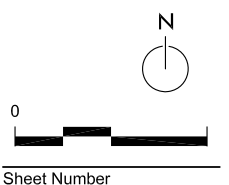
Revision	Date
ADDENDUM 2	02/14/2014

Project Name
**Elver Park
 Splashpad**

1250 McKenna Blvd
 Madison, WI 53719

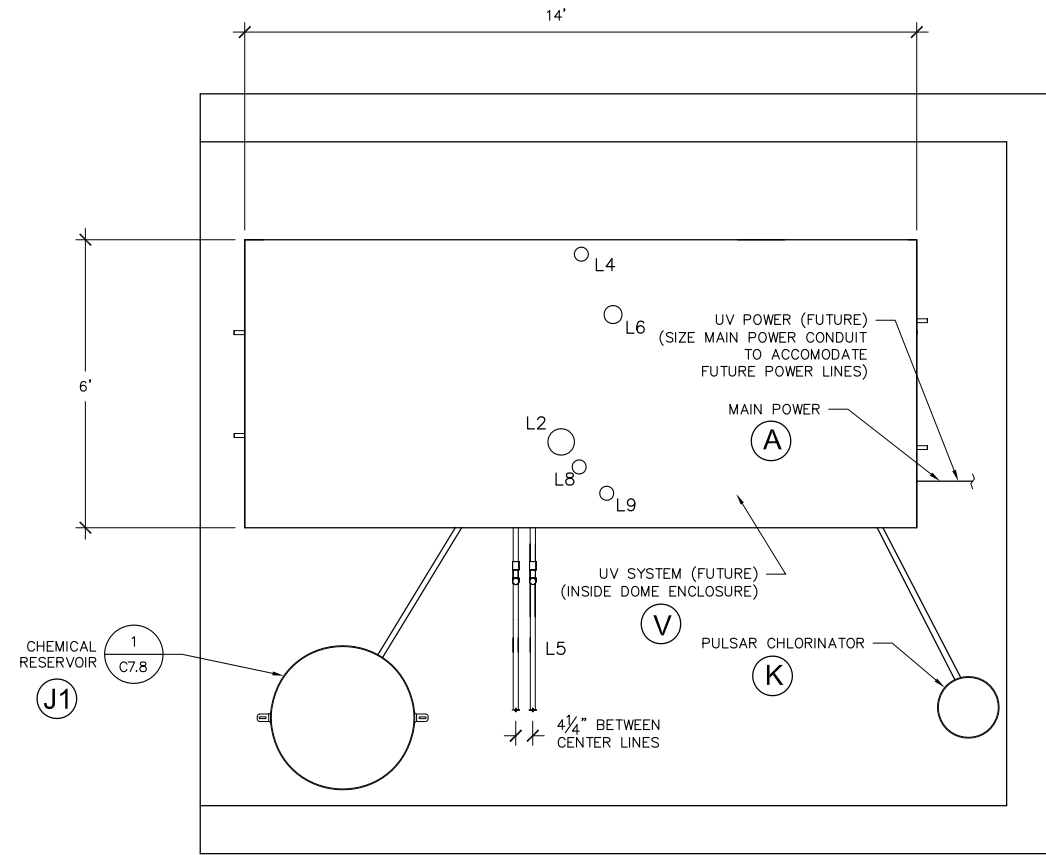
Drawn By: AO
 Checked By: BT
 File: P-D
 Issued For: Bidding
 Issue Date: 1/30/2014
 Project No. 2532

DRAWING
DETAILS



Sheet Number

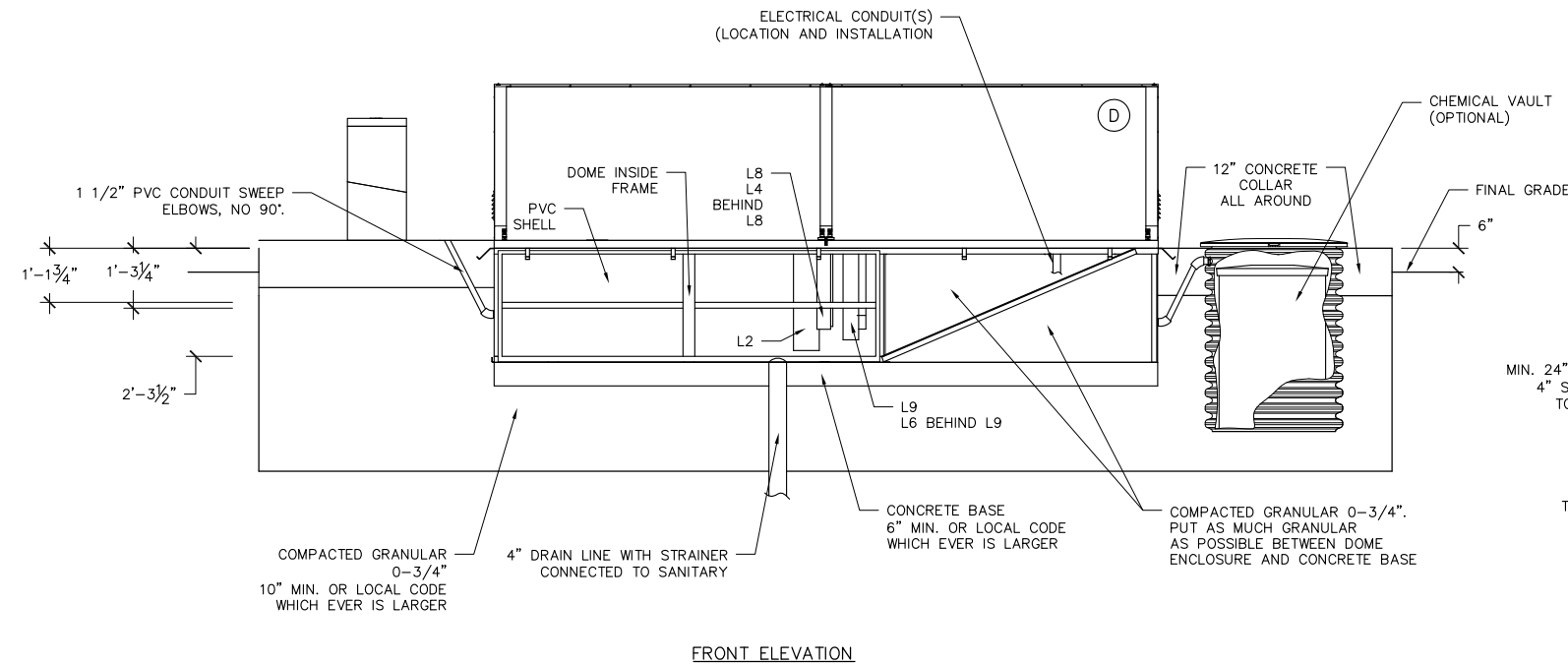
C7.10



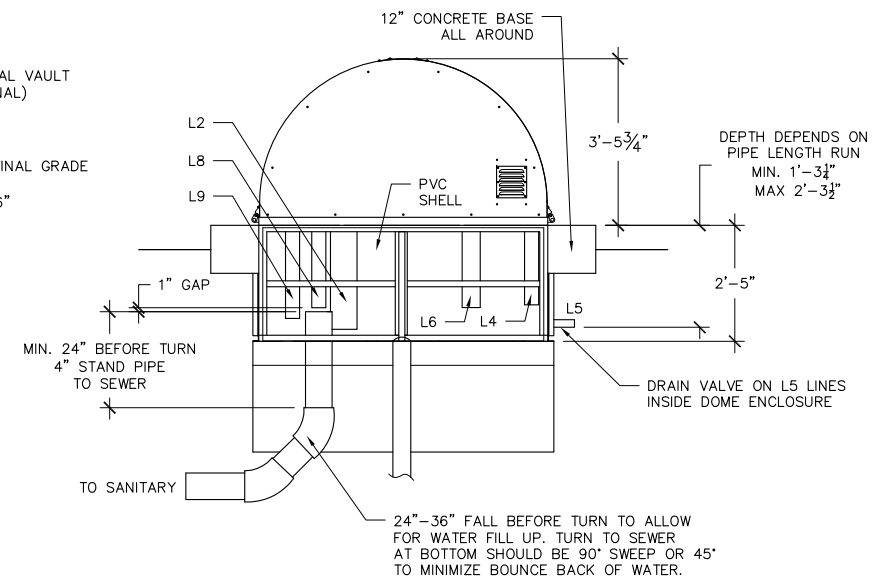
PLAN VIEW

NOTES:

- 1) PIPES L2, L4, L6 AND L9 CAN GO OUT THROUGH SIDE WALLS OR THROUGH BOTTOM CONCRETE BASE.
- 2) PIPE LOCATIONS ARE APPROXIMATE AND SUBJECT TO CHANGE.



FRONT ELEVATION



SIDE ELEVATION

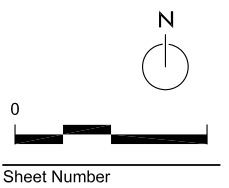
Revision	Date
ADDENDUM 2	02/14/2014

Project Name
**Elver Park
 Splashpad**

1250 McKenna Blvd
 Madison, WI 53719

Drawn By: AO
 Checked By: BT
 File: P-D
 Issued For: Bidding
 Issue Date: 1/30/2014
 Project No. 2532

DRAWING
DETAILS



Sheet Number

C7.11

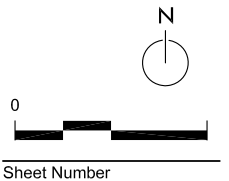
Revision	Date
ADDENDUM 2	02/14/2014

Project Name
**Elver Park
 Splashpad**

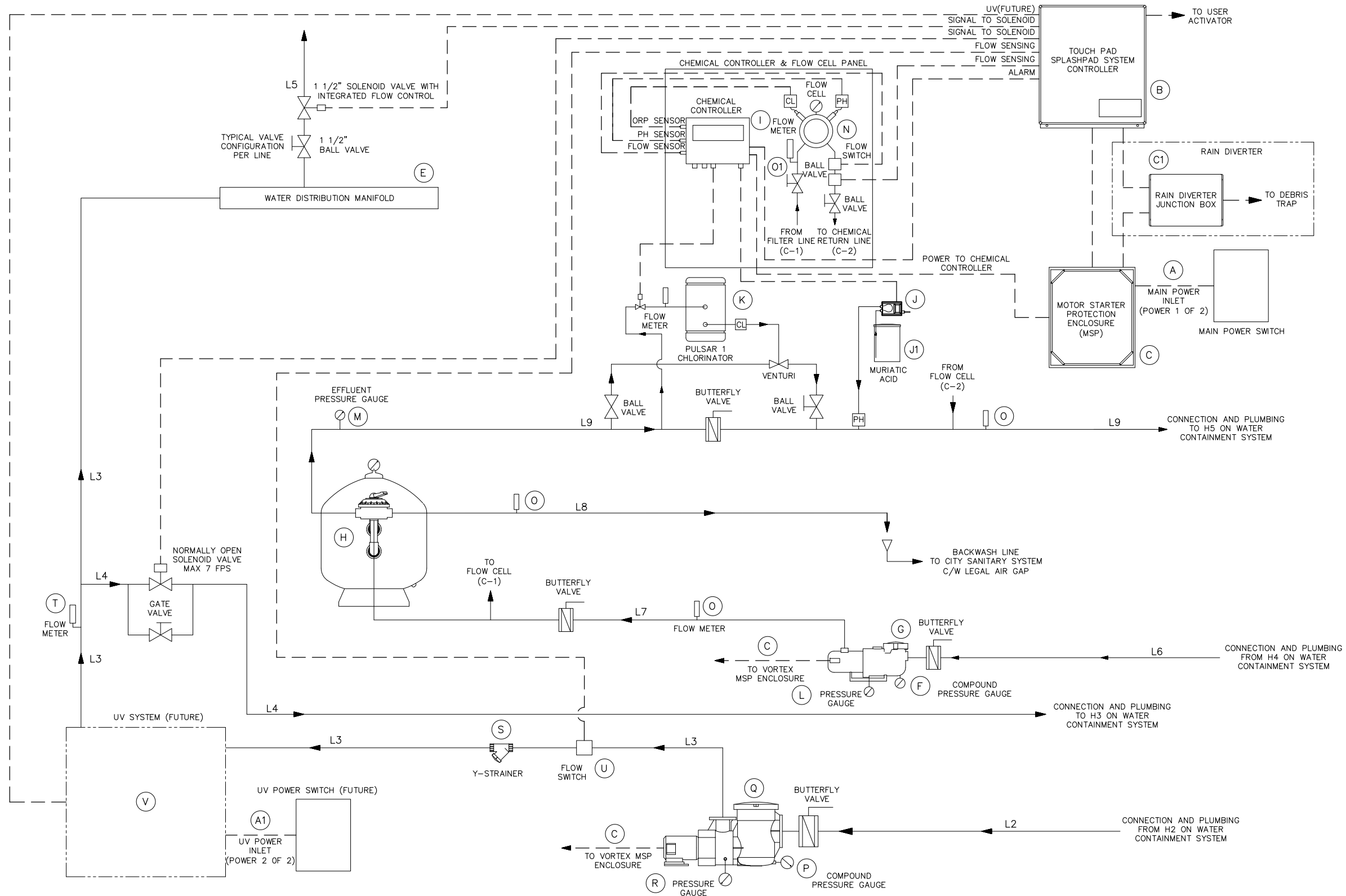
1250 McKenna Blvd
 Madison, WI 53719

Drawn By: AO
 Checked By: BT
 File: P-D
 Issued For: Bidding
 Issue Date: 1/30/2014
 Project No. 2532

DRAWING
DETAILS



Sheet Number
C7.12



1 WATER QUALITY MANAGEMENT SYSTEM
 C7.12

SCALE: NTS

WATER QUALITY MANAGEMENT SYSTEM SPECIFICATIONS				
ITEM	ITEM	PROVIDED BY	DESCRIPTION	QTY
GENERAL				
A	MAIN ELECTRICAL POWER	CONTRACTOR	230 VAC, 55 AMPS, SINGLE PHASE, 60 Hz.	1
A1	UV ELECTRICAL POWER	CONTRACTOR	CONDUIT TO BE INSTALLED FOR FUTURE USE	1
B	SPLASHPAD SYSTEM CONTROLLER	VORTEX	26 OUTPUT TOUCH SCREEN INTERFACE CONTROLLER, PREWIRED TO ALL SKID MOUNTED COMPONENTS. USER PROGRAMMABLE OPERATIONAL HOUR TIME CLOCK AND SPLASHPAD SPRAY SEQUENCES. INCLUDE FACTORY PRESET SPRAY SEQUENCE. EQUIPMENT AND ALARM FAILSAFES.	1
C	MOTOR STARTER PROTECTION ENCLOSURE	VORTEX	MOTOR STARTERS AND OVERLOAD RELAYS. INDIVIDUAL CONTROL FOR EACH PUMP.	1
C1	RAIN DIVERTER JUNCTION BOX	VORTEX	PREWIRED TO SYSTEM CONTROLLER & MOTOR STARTER PROTECTION ENCLOSURE. CONTROL VALVE FOR RAIN DIVERTER IN DEBRIS TRAP.	1
D	SYSTEM ENCLOSURE	VORTEX	29" BELOW GRADE FIBER REINFORCED POLYMER COMPOSITE BASE. 72"W X 168"L X 42"H STAINLESS STEEL ENCLOSURE W/ ALUMINUM LOCKABLE ACCESS DOORS.	1
E	WATER DISTRIBUTION MANIFOLD	VORTEX	15 VALVES DISTRIBUTION MANIFOLD, PREWIRED TO ALL SOLENOIDS. WITH BALL VALVES.	1
FILTRATION AND CHEMICAL TREATMENT LOOP				
F	COMPOUND GAUGE	WINTER INSTRUMENTS	COMPOUND GAUGE, 0-30" Hg / 0-60 PSI	1
G	FILTRATION PUMP	PENTAIR, WHISPERFLO, WF-12	3 HP, SELF PRIMING PUMP, SINGLE PHASE 230V, 127 GPM @ 70 FT HD, 141 GPM @ 60 FT HD, 14.1 AMPS FLA @ 230V. NSF CERTIFIED.	1
H	SAND FILTER	PENTAIR, TRITON, TR-140C	7.06 SQ. FT, 141 GPM @ 20 GPM/SQ FT, 106 GPM @ 15 GPM/SQ. FT, 36" DIAMETER, BACKWASH VALVE INCLUDED. NSF CERTIFIED.	1
I	CHEMICAL CONTROLLER	BECS TECHNOLOGY, BECSYS3	ORP AND PH CONTROL WITH HIGH / LOW READING ALARM. NSF 50 CERTIFIED.	1
J	PERISTALTIC PUMP	BLUE-WHITE IND, A1N20A-6T	UP TO 24GPD FEED CAPACITY, NSF CERTIFIED.	1
J1	CHEMICAL RESERVOIR	VORTEX	SEE CHEMICAL RESERVOIR INSTALLATION DRAWINGS FOR DETAILS. SEE DETAIL 1/C7.8	1
K	CHLORINE FEED SYSTEM	PULSAR 1 CHLORINATOR	CALCIUM HYPOCHLORITE AUTOMATIC CHLORINATOR. NSF CERTIFIED.	1
L	PRESSURE GAUGE	WINTER INSTRUMENTS	PRESSURE GAUGE, 0-60 PSI	1
M	EFFLUENT PRESSURE GAUGE	WINTER INSTRUMENTS	PRESSURE GAUGE, 0-60 PSI	1
N	FLOW SWITCH	HARWILL	FLOW SWITCH, 24V	2
O	FLOW METER	BLUE-WHITE IND, F-300 SERIES	3" PIPE FLOW METER, 40-140 GPM READING	3
O1	FLOW METER	BLUE-WHITE IND, F-400 SERIES	3/8" PIPE FLOW METER, 0.2-2 GPM READING	1
PLAY PRODUCT LOOP				
P	COMPOUND GAUGE	WINTER INSTRUMENTS	COMPOUND GAUGE, 0-30" Hg / 0-60 PSI	1
Q	PLAY PRODUCT PUMP	PENTAIR, EQ SERIES, EQ500	5 HP, SELF PRIMING PUMP, SINGLE PHASE, 230V, 230 GPM @ 70 FT HD, 270 GPM @ 60 FT HD, 19.6 AMPS FLA. NSF CERTIFIED.	1

WATER QUALITY MANAGEMENT SYSTEM SPECIFICATIONS				
ITEM	ITEM	PROVIDED BY	DESCRIPTION	QTY
PLAY PRODUCT LOOP				
R	PRESSURE GAUGE	WINTER INSTRUMENTS	PRESSURE GAUGE, 0-60 PSI	1
S	Y-STRAINER	SPEARS	4" PVC STRAINER WITH MESH BASKET	1
T	FLOW METER	BLUE-WHITE IND, F-300 SERIES	4" PIPE FLOW METER, 125-500 GPM READING	1
U	FLOW SWITCH	IFM EFECTOR	FLOW SWITCH, 24V	1
V	ULTRA VIOLET SYSTEM (FUTURE)	FUTURE	FUTURE	

LINE SIZE CONNECTION CHART				
BY	FROM	TO	ITEM	SIZE
VORTEX	PLAY PRODUCT PUMP Q	WATER DISTRIBUTION MANIFOLD E	L3	4"
VORTEX	FILTRATION PUMP G	SAND FILTER H	L7	3"
CONTRACTOR	WATER CONTAINMENT SYSTEM H2	PLAY PRODUCT PUMP Q	L2	6"
CONTRACTOR	LINE L3	WATER CONTAINMENT SYSTEM H3	L4	3"
CONTRACTOR	WATER DISTRIBUTION MANIFOLD E	PLAY PRODUCTS	L5	SEE SHEET C5.2
CONTRACTOR	WATER CONTAINMENT SYSTEM H4	FILTRATION PUMP G	L6	4"
CONTRACTOR	SAND FILTER H	SANITARY SEWER SYSTEM	L8	3"
CONTRACTOR	SAND FILTER H	WATER CONTAINMENT SYSTEM H5	L9	3"

NOTE:
 REFER TO VORTEX' WATER QUALITY MANGEMENT SYSTEM AND VORTEX' WATER CONTAINMENT SYSTEM FOR PIPE SIZES. BETWEEN THE TWO SYSTEMS, PUT THE LESSER OF THE TWO PIPE SIZE.